

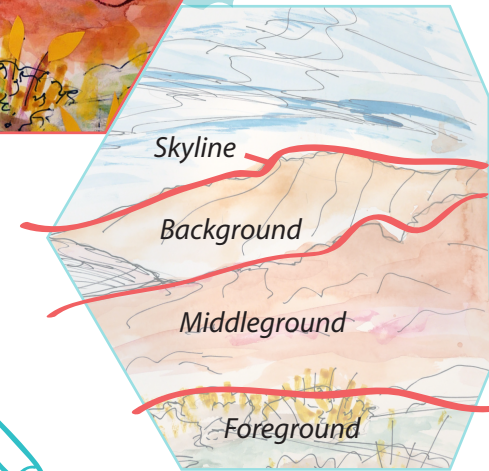
Layers

Watercolor Landscapes

Materials

- Rag or Paper towels
- Heavy Paper (4 Sheets)
- Pencil
- Sharpie or Pen
- Watercolor Paint
- Paint Brushes
- Cup of Water
- Hard Surface to work on

A landscape is an outside, natural space that sometimes includes man-made objects like buildings. No matter the setting, most landscapes have layers — layers of lines and layers of color. To create your watercolor landscape, you are going to draw four layers of land and experiment with linework and watercolor techniques.



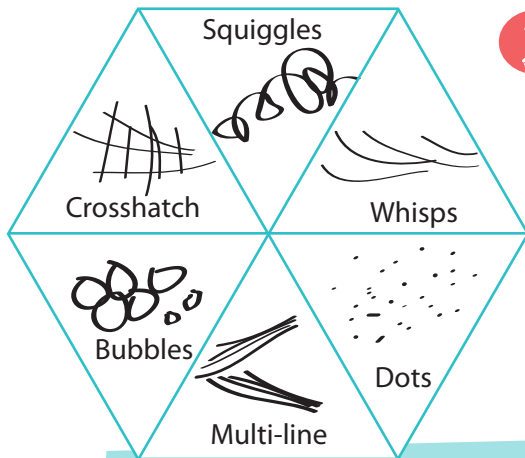
1 Find it

- Find your landscape!** Go outside. Look out your window. Find an image online or in a book. Use your imagination to create your own world!
- Frame your landscape!** This will help you decide what to draw. Make a paper frame by cutting out a rectangle from the middle of a piece of paper. Or make a frame by extending your arms and using your fingers.
- Decide your layout.** A landscape view is long, wide, and horizontal. A portrait view is tall, narrow and vertical.

2 Sketch it

- Draw a line on your paper where you see a skyline. This is where the land meets the sky.
- Sketch the layers below the skyline. The background is just under the skyline. The foreground is the area closest to you. The middleground is the area between the background and the foreground.
- Trace over your pencil sketch with a pen, and begin adding details by experimenting with different kinds of linework.





Linework

Have fun trying all different kinds of lines when you draw! Make up your own!

3 Paint it

- Set your landscape drawing aside, fill up a cup of water, and find a paint brush.
- Grab a blank sheet of paper, dip your brush in the water, dab it in the paint, and begin experimenting. See what kind of effects you can make by playing around with different amounts of water and paint.
- After playing with the watercolor, grab your landscape drawing and start applying what you've learned in your watercolor experiments!
- Add more paint in some areas that haven't dried yet, or wait for the first layer to dry and add another layer of color on top.

Painting Technique

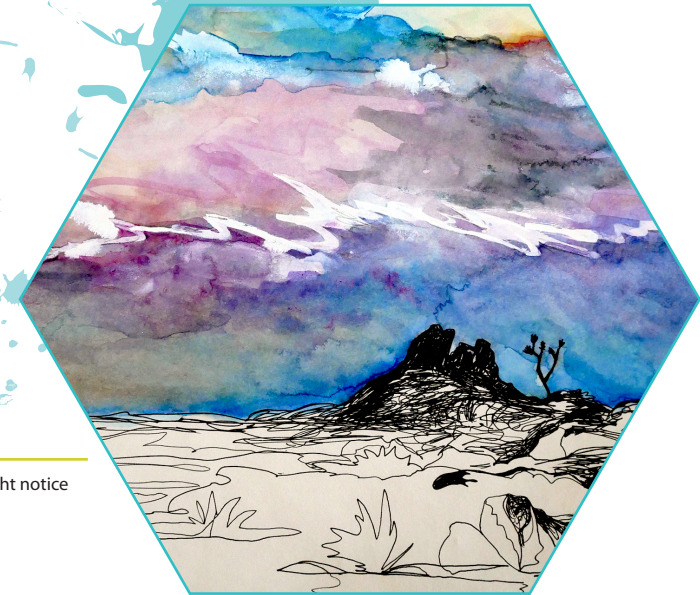
- *Wet on Wet*: wet the paper, then add wet brush with paint
- *Dry on Dry*: paint onto dry paper with a relatively dry brush
- *Wet on Dry*: wet brush with paint on dry paper

Assignment!

- Show five different kinds of linework on one sheet of blank paper.
- Use an entire page to experiment with watercolor and try the three watercolor techniques.
- Create a complete landscape by sketching the landscape, adding the linework, and playing with watercolor.

Share

Upload a picture of your art to www.groundworkarts.com/share and be inspired by other art too!



Watch the how-to video!

Get more Watercolor Landscape tips and info at: www.groundworkarts.com/layers